



PLAT Nos. - 010202 to 011402





LOCATION MAP





LEGEND

- 01 MAIN ENTRY/EXIT
- 02 ENTRANCE TO RESIDENTIAL COMPLEX
- 03 CIVIC AMENITIES
- 04 TRANSFORMER YARD
- 05 SECURITY
- 06 PARK & OPEN SPACES

- 07 JOGGING TRACK
- 08 SKATING RING
- 09 SWIMMING POOL/TODDLER
- 10 CHILDRENS PLAY AREA
- 11 AROMA GARDEN
- 12 SENIOR CITIZEN PARK
- 13 SHADED PATHWAY
- 14 CAR PARK
- 15 STP
- 16 CASCASDE/WATER FEATURE
- 17 UGR
- 18 VOLLEY BALL COURT
- 19 TENNIS COURT
- 20 CRICKET PITCH
- 21 O.A.T
- 22 RAMP
- 23 FIRE DRIVEWAY
- 24 LOBBIES



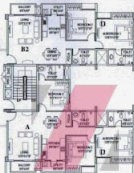
TYPE -C6 (2BHK)

SALEABLE AREA - 1196 sq ft



TYPE -B2 (2 1/2 BHK)

SALEABLE AREA - 1306sq



TYPE -A3 (3BHK)

SALEABLE AREA - 1640 sq ft



* AREA SUBJECT TO CHANGE

PROJECT:

SUNDRAM SUMMIT
AT ELECTRONIC CITY

DRAWING TITLE:

LAYOUT PLAN (GROUND FLOOR)

DATE:

27/02/2013

DRAWING No.:

174

SCALE:

4/3

N



CLIENT:

SUNDRAM PROPERTIES
SADASHV NAGAR
BANGLORE.

ARCHITECT:



SUNDRAM ARCHITECTS PVT LTD
ARCHITECTS - ENGINEERING CONSULTANTS
SARATHI PONDIA & COMPANY LLP, BANGLORE, INDIA
REG. NO. 124/2005 (ART) 2005 (2005) 11/2005 114/2005/2005/2005